

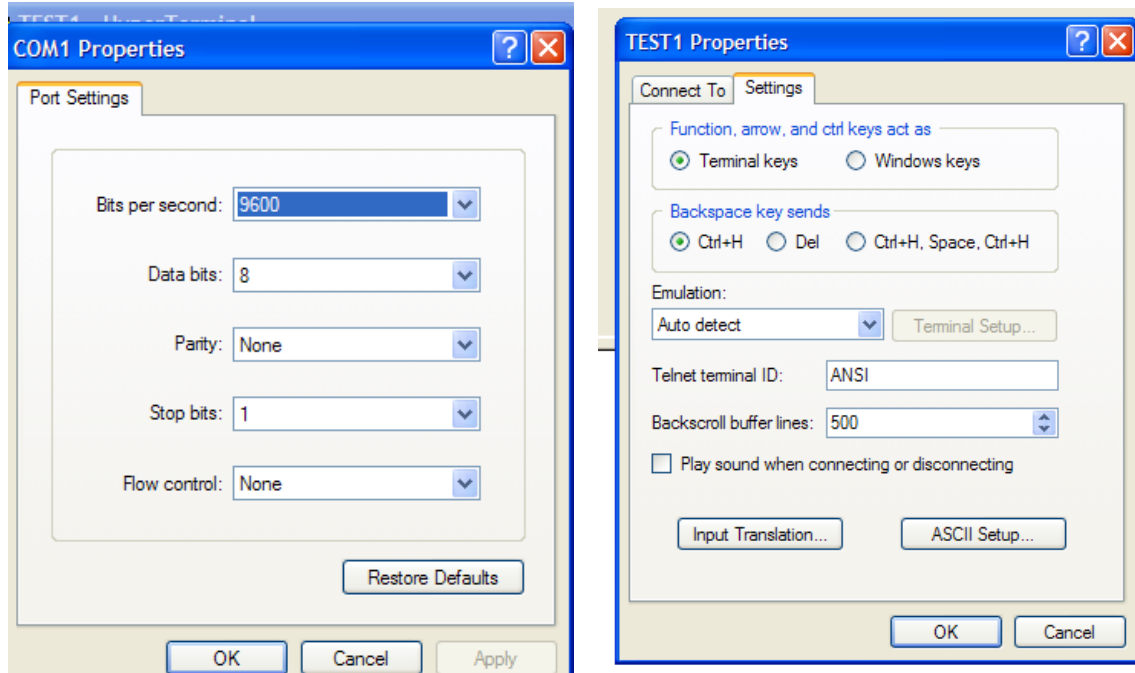
## PROTOCOL COMMANDS List (RAU software V0.36)

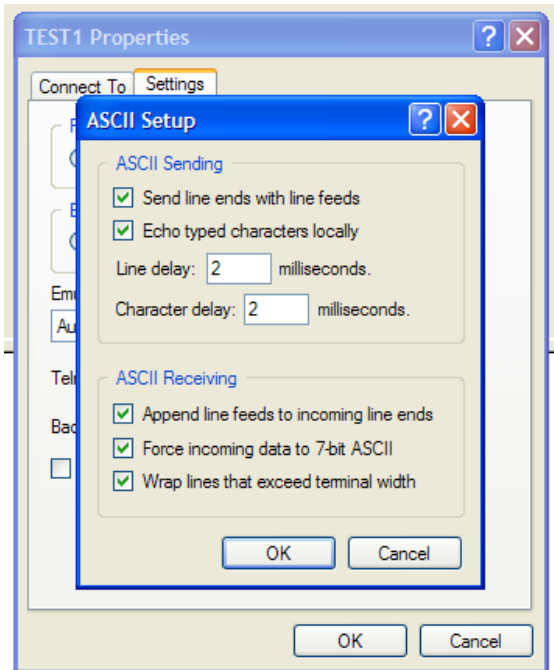
Command	Value Range	Definition
CAPB		CAPTURE BUTTON NUMBERS
CAPE		EXIT CAPTURE BUTTON
FADE=XYZ	XYZ=000 to 254	SET FADE RATE
GRPG		SPECIFY ALL LOADS (GLOBAL)
GRPS@PP. C	PP=01 to 63 C=1 to 4	COMMANDS A SINGLE LOAD IN PP =Module # (in decimal) ; C=Circuit #
GRPS@PP. 5	PP=01 to 63	COMMANDS ALL LOADS PP =Module # in decimal
LVEQ=XYZ	XYZ=000 to =100	SET LEVEL EQUAL TO
LVOF		SET LEVEL TO FULL OFF
LVON		SET LEVEL TO FULL ON
LVRQ		REQUESTS LEVEL OF LAST LOAD or LOADS ENTERED
LVUP		START RAMPING LEVEL UP
LVDN		START RAMPING LEVEL DOWN
LVST		STOP RAMPING LEVEL
MENU		RETURNS TO RAU96 MENU
PSTR=XYZ	XYZ=001 to =254	PST RECALL
PSTS==XYZ	XYZ=001 to =254	PST SAVE
RUNC		RUN CURRENT COMMAND IN BUFFER WITH LED REQUEST
TSTC		RUN CURRENT COMMAND

All above commands could be sent to the RAU-96 interface to allow control and monitoring of the **PROTOCOL** Dimmers and Station keypads.

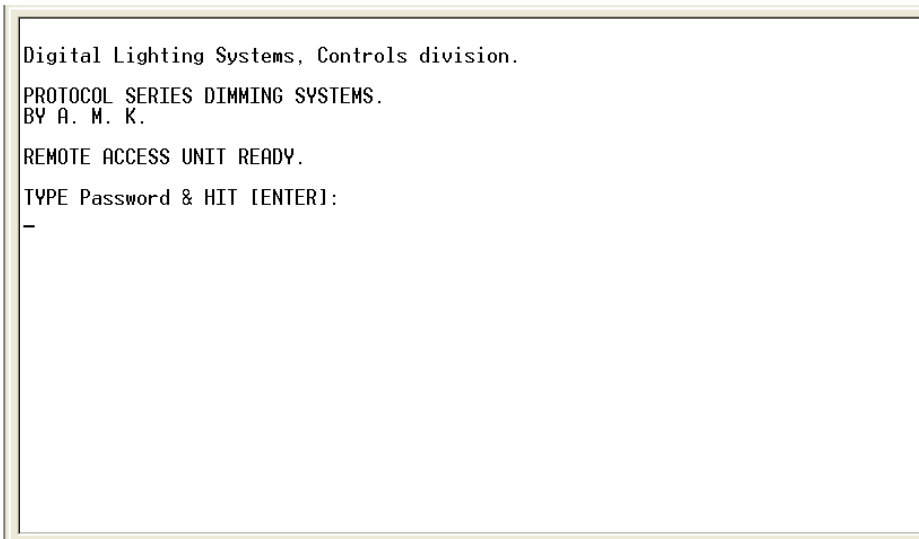
## PROTOCOL COMMANDS INSTRUCTIONS:

### SETTING THE COMMUNICATION PORT:





Once the communication port is set make sure that the **RAU96** is powered and connected to the correct RS232 COM port. Hit ENTER and you should get the following screen:



Enter the default pass word : **1234** , you should get the following screen of the Main Menu

```
Digital Lighting Systems, Controls division.
PROTOCOL SERIES DIMMING SYSTEMS.
BY A. M. K.
REMOTE ACCESS UNIT READY.
TYPE Password & HIT [ENTER]:
1234
***** MAIN MENU *****
[1] Host RAU Menu.
[2] Station Module Menu.
[3] Dimmer Module Menu.
[4] Patch Panel Menu.
[5] File Transfer Utility.
[6] General Diagnostics Menu.
[10] LOG OFF.
TYPE CHOICE & HIT [ENTER]:
-
```

#### **SETTING THE RAU-96 To COMMAND MODE:**

The RAU-96 is set at the factory DIAGNOSICS and PROGRAMMING mode .

To set to COMMAND mode: ( *This is done once and then the RAU-96 will remain on Command mode*)

Type 1 and enter. This will bring the Host RAU menu.

Type 10 and enter. The RAU-96 will go into COMMAND mode and will be ready to receive the ASCII commands.

The RAU-96 will remain in the COMMAND after power OFF and will be always ready to receive commands till \*MENU is entered instead of a command.

```
Digital Lighting Systems, Controls division.
```

```
PROTOCOL SERIES DIMMING SYSTEMS.  
BY A. M. K.
```

```
REMOTE ACCESS UNIT READY.
```

```
TYPE Password & HIT [ENTER]:  
1234
```

```
***** MAIN MENU *****
```

```
[1] Host RAU Menu.  
[2] Station Module Menu.  
[3] Dimmer Module Menu.
```

```
[4] Patch Panel Menu.  
[5] File Transfer Utility.  
[6] General Diagnostics Menu.  
[10] LOG OFF.
```

```
TYPE CHOICE & HIT [ENTER]:
```

```
1
```

```
***** HOST RAU MENU *****
```

```
[1] Modify Site Password.  
[2] View Current System Configuration.  
[3] Modify Current System Configuration.  
[4] Auto-Detect Current Active Configuration.  
[5] Copy Auto-Detect Results to Current Configuration.  
[6] Save to RAU Memory.  
[7] Send Configuration to Individual Nodes.  
[8] About RAU.  
[9] Default to Factory Settings.  
[10] GO TO COMMAND MODE.  
[11] Exit To Main Menu.
```

```
TYPE CHOICE & HIT [ENTER]:
```

```
10  
RAU>
```

Once the RAU-96 is set to COMMAND mode . The **RAU>** string appears on the screen and the RAU-96 is ready to receive and execute the strings of commands.

The RAU-96 will remain in COMMAND mode regardless of power conditions till the command **\*MENU** is entered.

Every command should be preceded by an asterisk **\*** .

All commands should be entered in UPPER CASE.

Commands could be entered in any sequence followed by RUNC then <Enter>

After **\*RUNC** the RAU-96 will send **RAU>** to the screen when it is ready to receive another commands string and execute it.

## ENTERING COMMANDS

Every command should be preceded by an asterisk **\*** .

All commands should be entered in UPPER CASE.

Commands could be entered in any sequence followed by RUNC then <Enter>

After **\*RUNC** the RAU-96 will send **RAU>** to the screen when it is ready to receive another commands string and execute it.

The following is a command string example :

**\*GRPS@01.1\*LVEQ=050\*RUNC <Enter>**

**This command will bring circuit #1 in module #1 to a 50% level.**

```

Digital Lighting Systems, Controls division.

PROTOCOL SERIES DIMMING SYSTEMS.
BY A. M. K.

REMOTE ACCESS UNIT READY.

TYPE Password & HIT [ENTER]:
1234
***** MAIN MENU *****
[1] Host RAU Menu.
[2] Station Module Menu.
[3] Dimmer Module Menu.
[4] Patch Panel Menu.
[5] File Transfer Utility.
[6] General Diagnostics Menu.
[10] LOG OFF.

TYPE CHOICE & HIT [ENTER]:
1
***** HOST RAU MENU *****
[1] Modify Site Password.
[2] View Current System Configuration.
[3] Modify Current System Configuration.
[4] Auto-Detect Current Active Configuration.
[5] Copy Auto-Detect Results to Current Configuration.
[6] Save to RAU Memory.
[7] Send Configuration to Individual Nodes.
[8] About RAU.
[9] Default to Factory Settings.
[10] GO TO COMMAND MODE.
[11] Exit To Main Menu.

TYPE CHOICE & HIT [ENTER]:
10
RAU>
*GRPS@01.1*LVEQ=050*RUNC
RAU>

```

The following command will turn this same circuit OFF:

**\*LVOF\*RUNC**

Note that the circuit number command \*GRPS@01.1 did not have to be entered. The RAU-96 will remember the last Circuit and would keep sending commands to it till another GRPS@pp.c is sent.

```

Digital Lighting Systems, Controls division.
PROTOCOL SERIES DIMMING SYSTEMS.
BY A. M. K.

REMOTE ACCESS UNIT READY.

TYPE Password & HIT [ENTER]:
1234
***** MAIN MENU *****
[1] Host RAU Menu.
[2] Station Module Menu.
[3] Dimmer Module Menu.
[4] Patch Panel Menu.
[5] File Transfer Utility.
[6] General Diagnostics Menu.
[10] LOG OFF.

TYPE CHOICE & HIT [ENTER]:
1
***** HOST RAU MENU *****
[1] Modify Site Password.
[2] View Current System Configuration.
[3] Modify Current System Configuration.
[4] Auto-Detect Current Active Configuration.
[5] Copy Auto-Detect Results to Current Configuration.
[6] Save to RAU Memory.
[7] Send Configuration to Individual Nodes.
[8] About RAU.
[9] Default to Factory Settings.
[10] GO TO COMMAND MODE.
[11] Exit To Main Menu.

TYPE CHOICE & HIT [ENTER]:
10
RAU>
*GRPS@01.1*LVEQ=050*RUNC
RAU>
*LVOF=RUNC
RAU>
-

```

Other examples:

Example: **\*PSTS=001\* GRPG\*RUNC <Enter>**

**This command will SAVE in Preset Number 1 the current levels of all the circuits in the system.**

Example: **\*PSTR=001\* GRPG\*RUNC <Enter>**

**This command will RECALL Preset Number 1 for all circuits in the system.**

Example: **\*GRPS@03.2\* LVRQ\*RUNC <Enter>**

**This command will Display the % level of Channel #2 in Module #03.**