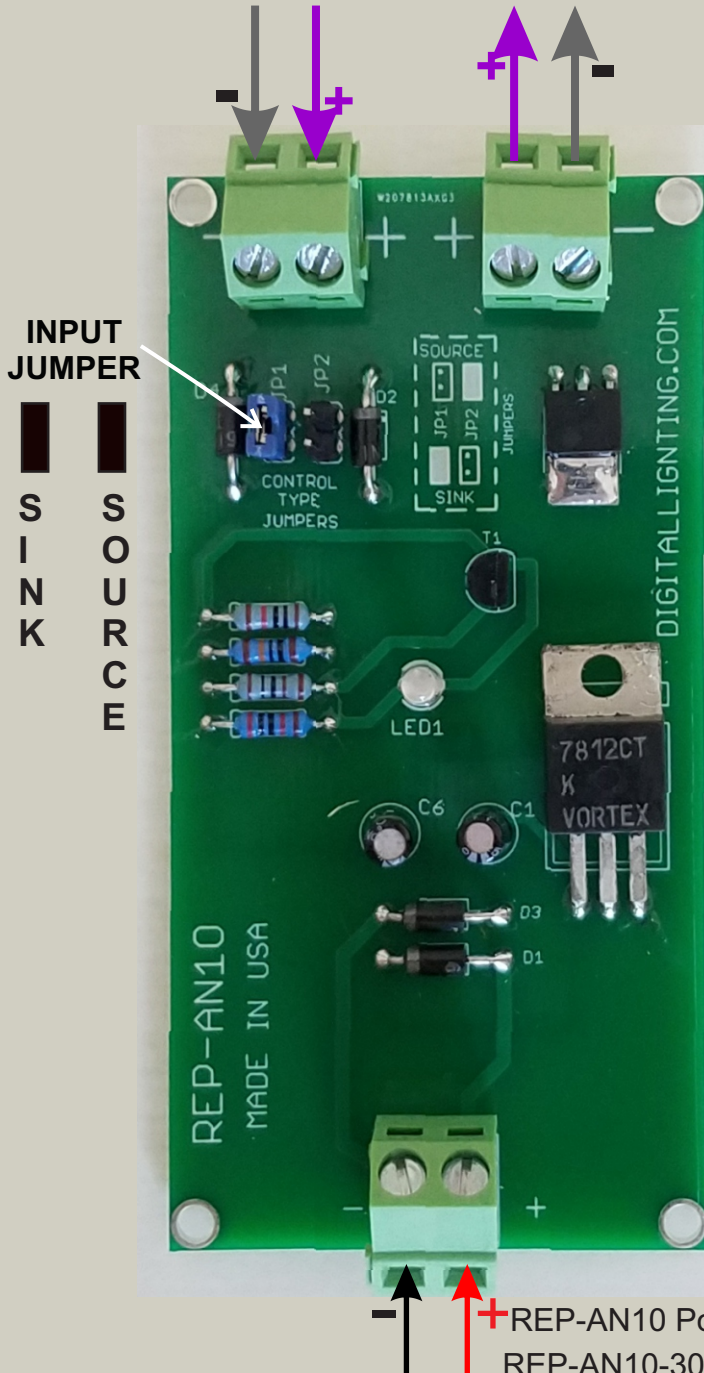


REP-AN10 Analog control signal repeater amplifier:
INPUT : SINKING or SOURCING 0-10 VDC analog signal.
OUTPUT : Sinking 150 mA max. 0-10V analog signal.

Sinking or Sourcing
0-10V Control INPUT

Sinking
0-10V Control OUTPUT

Made in USA



REP-AN10:
Operating Voltage
12 VDC

REP-AN10-30:
Operating Voltage
14.5 VDC to 30 VDC

- + REP-AN10 Power input: 12 VDC ; 100 mA
- + REP-AN10-30 Power input: 4.5 VDC to 30 VDC ; 100 mA